



MECHANICAL

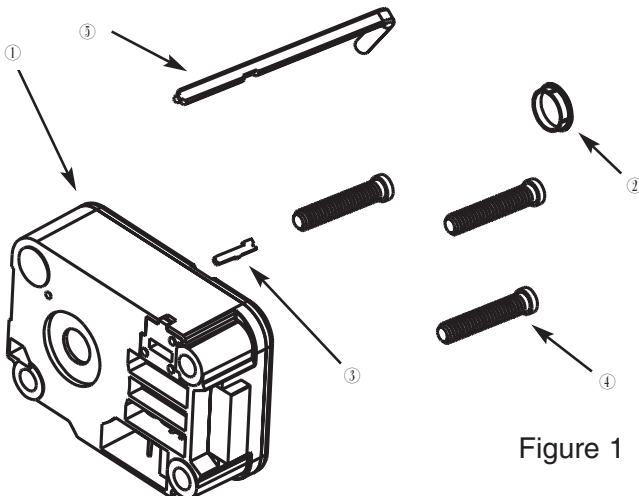
3370 GROUP 2M LOCK

INSTALLATION INSTRUCTIONS

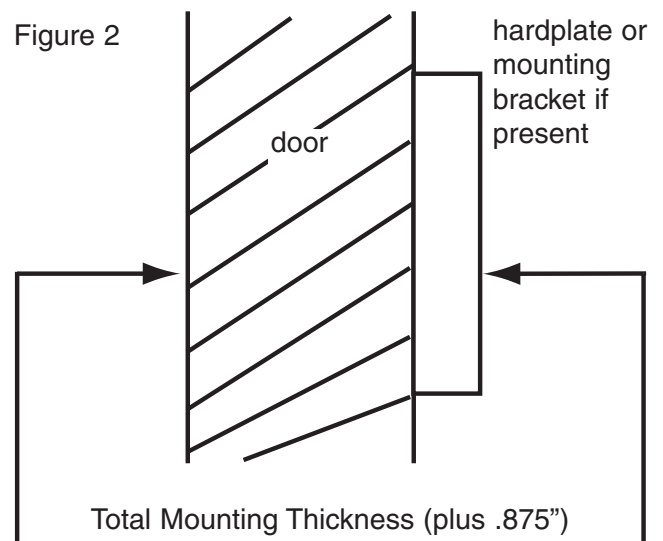
The Quality System at LA GARD INC is ISO 9001 certified. In order to maintain this high quality standard and to ensure a problem free application, please read this guide thoroughly before mounting the LA GARD 3370 mechanical lock.

SAFEGUARDS FOR MOUNTING THE LOCK

- ① Keep metal dust, filings, etc. away from the lock.
- ② Never remove the lock cover, this voids the LA GARD warranty policy.
- ③ Never oil, grease, lubricate or paint the lock.
- ④ Never re-use the spline key.



- ① Group 2M Mechanical Lock (P/N 3370)
② Cover Insert (P/N 3382)
Hardware Pack (P/N 3327) Includes
③ Spline Key (P/N 1712)
④ Mounting Screws (P/N 2930 - Qty. 3)
⑤ Change Key (P/N 1307)



MOUNTING INSTRUCTIONS

- ① Measure mounting thickness (door thickness + mounting surface), see Figure 2 above.
- ② Mount the dial ring centered on the spindle hole.
- ③ Using the mounting screws provided in the hardware pack, mount the lock to door. Make sure that the spindle hole on the lock is properly aligned with the spindle hole of the safe door.

NOTE: The lock bolt MUST remain in the retracted position throughout the installation procedure. To ensure this keep one finger over the bolt while mounting the lock and installing the spindle. If the bolt extends at any point during the installation procedure, please follow the Retracting The Lock Bolt instructions on page two.

- ④ Cut and deburr the spindle. To cut the correct spindle length add .875" (7/8", 22.225mm) to the mounting thickness, see Figure 2 above.

- ⑤ Insert the spindle through the spindle hole of the door. Gently thread (clockwise) the spindle through the drive cam until tight. Rotate (counterclockwise) at least 1/2 turn until you come to the correct spline position. Please refer to the Spline Key Position Chart below, see Figure 3.
- ⑥ Insert the spline key fully into the spline key slot.
- ⑦ Insert the black cover insert. This cover insert is not intended to keep the spline key in place, but rather to keep dust, etc. out.
- ⑧ ALL LA GARD locks are set to open with a default combination set to 50. (This may vary slightly by one or two numbers either up or down due to variations in alignment of dial ring during installation.) To test your lock follow the opening instructions using the default combination.

SPLINE KEY POSITION CHART

There are four positions in the cam for the spline key. The positions are marked as follows:

RH (*right hand*)

Lock bolt points right as you face the back of the door.

LH (*left hand*)

Lock bolt points left as you face the back to the door.

VU (*vertical up*)

Lock bolt points upward.

VD (*vertical down*)

Lock bolt points downward.

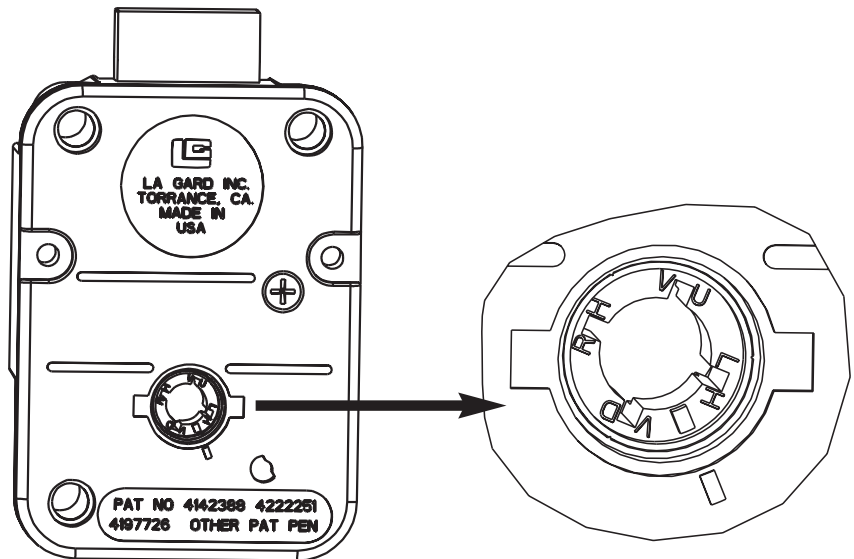


Figure 3

RETRACTING THE LOCK BOLT

The 3370 Group 2M Mechanical lock is shipped from the factory with the bolt in the retracted position. The bolt must remain in the retracted position during the entire installation process. The bolt may extend if the wheels are rotated during the installation process or if, when handling the lock, the cam rotates when an attempt is made to thread the spindle into the cam.

- ① To retract the bolt, the cam must be rotated 4 turns to the right (clockwise) when looking at the back cover of the lock. Use a small flat object, such as a screwdriver to catch the notches for the spline key in order to rotate the cam.
- ② You will need to align the mark on the drive cam to the one on the back cover. See Figure 4.
- ③ Rotate the cam to the left (counterclockwise) until the bolt is retracted (approximately 1/2 turn).
- ④ Holding the bolt in the retracted position, the spindle can now be threaded into the cam without the cam rotating.

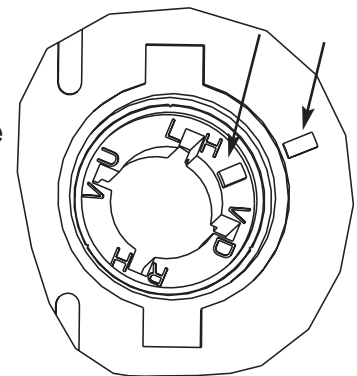


Figure 4