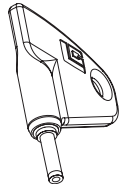
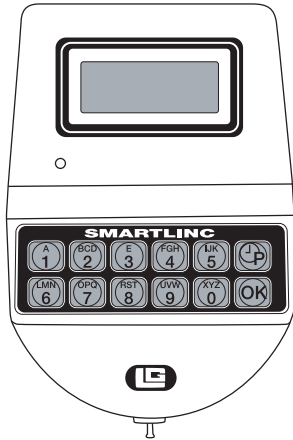




# SMARTLINC

Multiple Lock System

## SOFTWARE INSTALLATION INSTRUCTIONS



Optional  
eKey II  
P/N 40169

### CURRENT SOFTWARE

The current version of SMARTLINC SOFTWARE is V2.3.1. The current version of TOTAL AUDIT is V1.3.6. The current version of DSTUpdate is v1.3. All instructions marked 12-250v2 are relevant to these versions of the software.

### SMARTLINC SET-UP CD CONTENTS

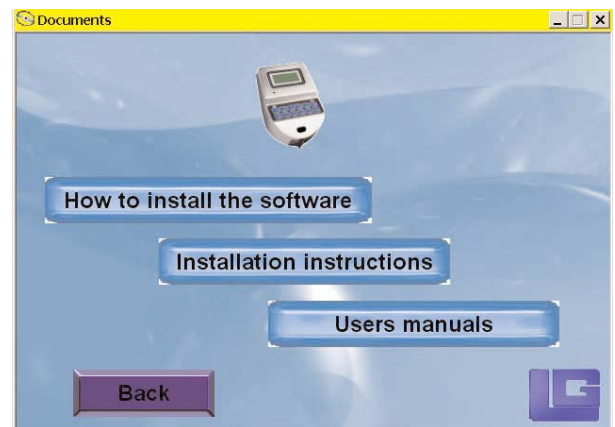
- SMARTLINC Set-up software
- TOTAL AUDIT software
- DSTUpdate software
- PDF files of ALL instruction sheets
- PDF file of SMARTLINC cutsheet

### SOFTWARE INSTALLATION

The SMARTLINC programming and audit CD is set to autorun when placed in the computers CD-ROM drive. If the autorun feature does not initiate, select the START button in the lower left hand corner of the window and then choose RUN. Select browse and then select the CD-ROM drive from the options available. Select the AUTORUN file on that CD and press RUN. Once the AUTORUN feature begins the first screen will appear, *see screen 1*.

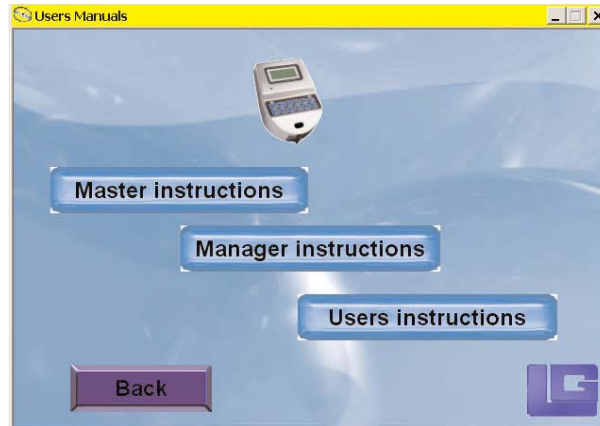


Screen 1



Screen 2

The **FEATURES** button will open a PDF of the product cut sheet detailing the SMARTLINC's features. The **DOCUMENTS** button will open a 2nd window, *see screen 2*. Selecting **HOW TO INSTALL THE SOFTWARE** or **INSTALLATION INSTRUCTIONS** will open a PDF of those instructions. Clicking the **USERS MANUALS** button on this screen will open another screen, *see screen 3*. Selecting **MASTER INSTRUCTIONS**, **MANAGER INSTRUCTIONS** or **USER INSTRUCTIONS** will open a PDF of those instructions.

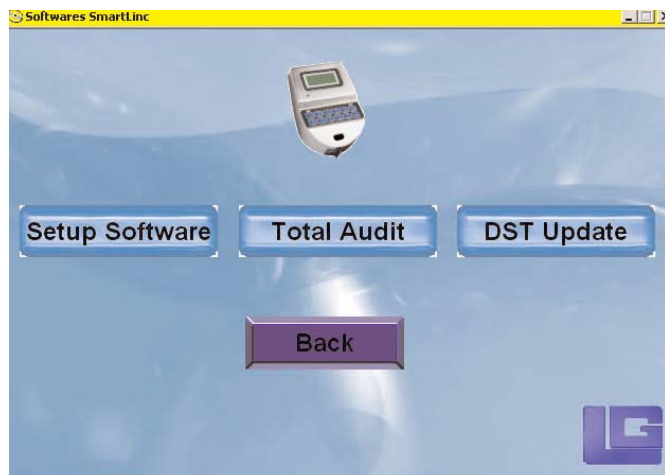


Screen 3

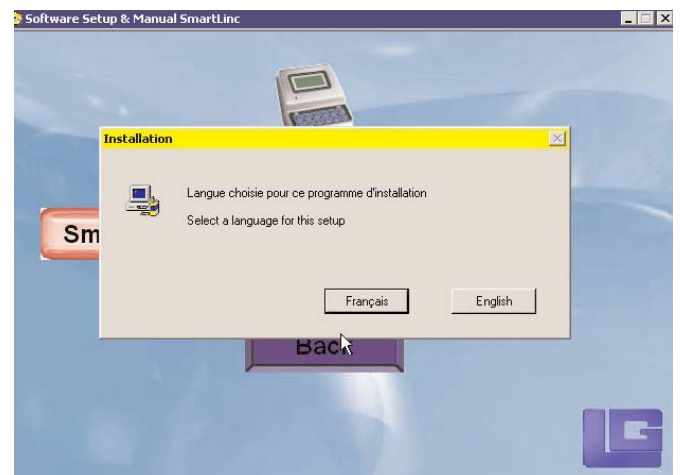
## SET-UP SOFTWARE INSTALLATION

Select the **SOFTWARES** button to move to the software selection screen, *see screen 4*. Software installation options include Set-up Software, the Total Audit Software and the DST Update Software. The software should be installed in this order.

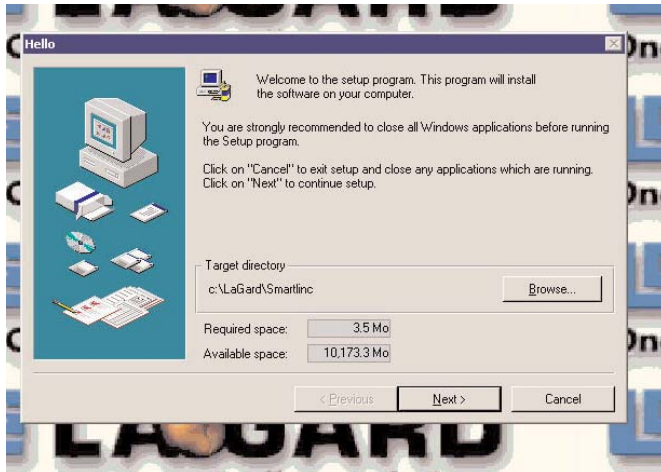
Once Set-up Software has been selected from Screen 4, the options are to install the Software itself or open the Manual. **The Manual is a PDF document that contains ALL of the SMARTLINC Instructions including Installation, Software Set-up, SMARTLINC Set-up, Total Audit, Master, Manager and User instructions. Please download and read the manual at this time.** As stated earlier, it is possible to download each instruction sheet one at a time through the CD. Select the SMARTLINC Set-up button to install the software. This operation can be performed in French or English, *see screen 5*.



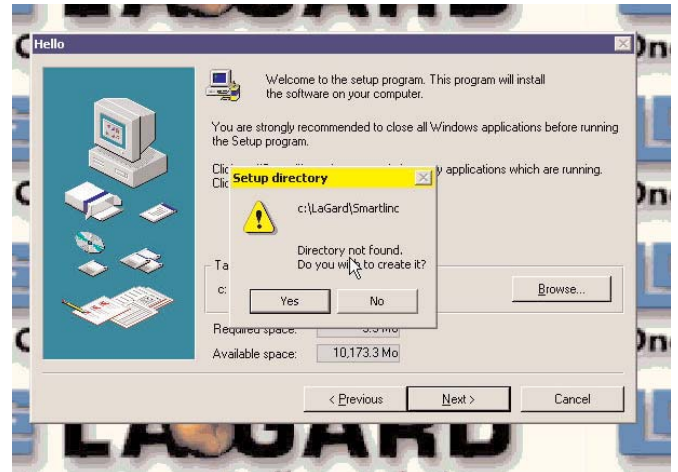
Screen 4



Screen 5

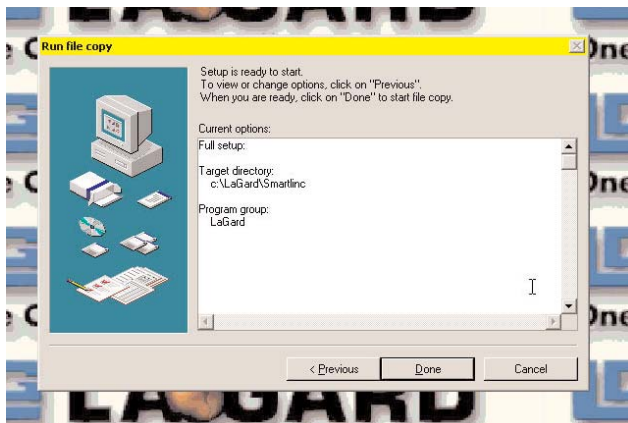


Screen 6

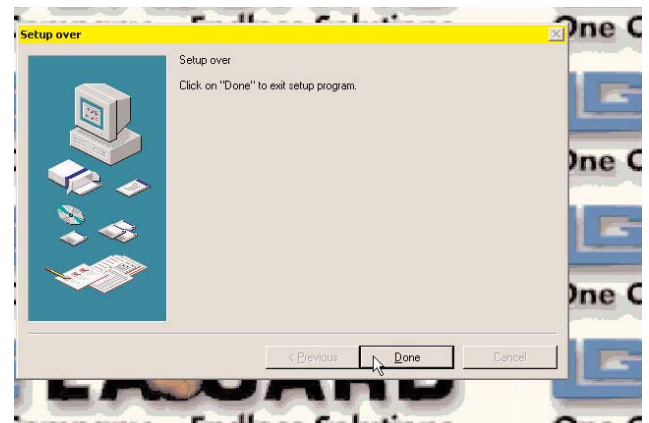


Screen 7

SMARTLINC Set-up software follows a series of prompts until the installation is complete, see *screens 6, 7, 8, and 9*. The Set-up procedure will create a folder on the C drive and add the SMARTLINC files to the LA GARD Program Group.



Screen 8

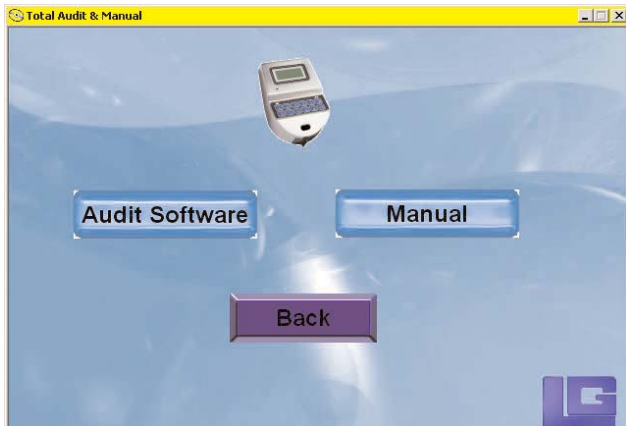


Screen 9

## TOTAL AUDIT SOFTWARE INSTALLATION

Once the installation of the programming software is complete, install the Total Audit software onto the computer. This software offers the ability to download and read audits from the locks. It should be installed on any machine that will be taking audits. LA GARD also offers this software on a separate CD by itself.

Select the Total Audit button from the software selection screen, see *Screen 4*. The Total Audit Menu will appear, see *screen 10*. The options are to install the Audit Software itself or open the Manual. **The Manual is a PDF document that contains the Total Audit instructions. Please download and read the manual at this time.** As stated earlier, it is possible to download each instruction sheet one at a time through the CD. Select the Audit Software button to install the software. This operation can be performed in French or English, see *screen 11*.

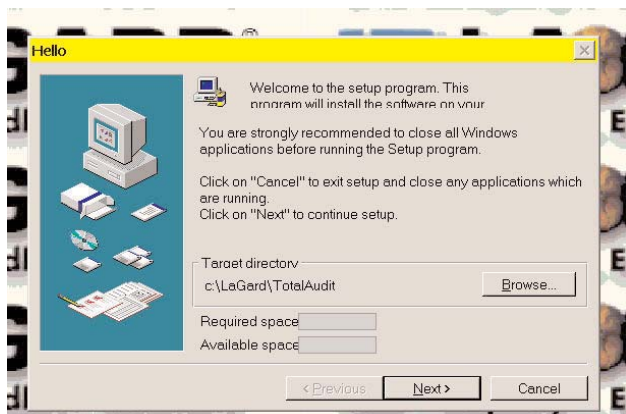


Screen 10

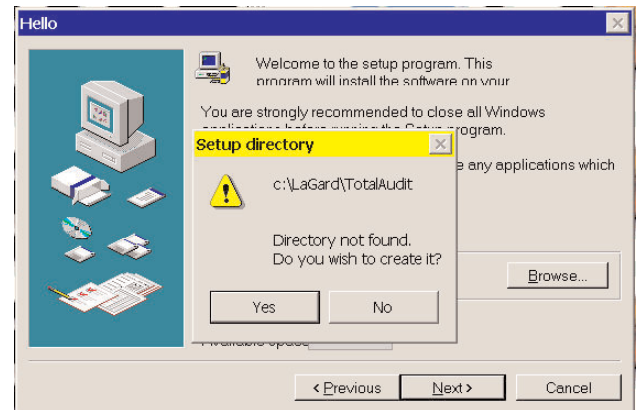


Screen 11

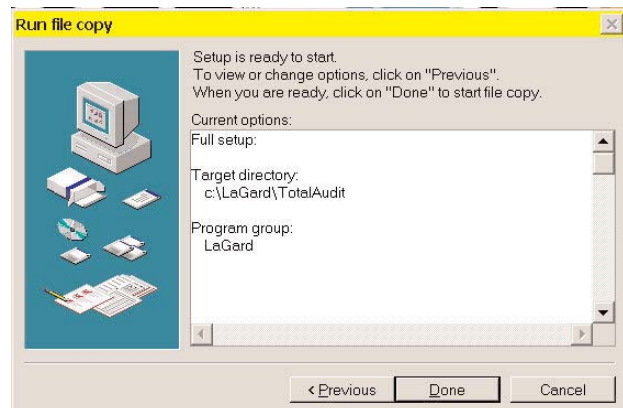
TOTAL AUDIT Set-up software follows a series of prompts until the installation is complete, see *screens 12, 13, 14 and 15*. The Set-up procedure will create a folder on the C drive and add the TOTAL AUDIT files to the LA GARD Program Group.



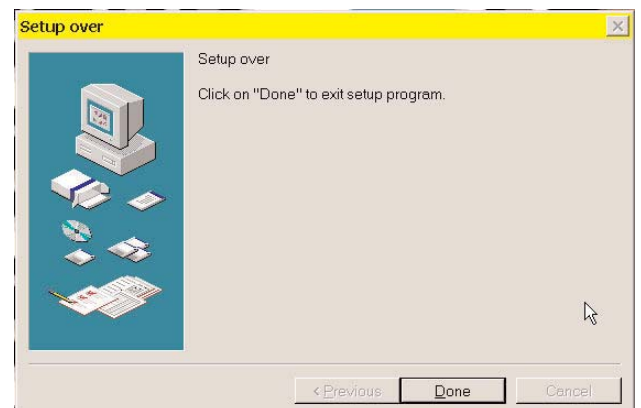
Screen 12



Screen 13



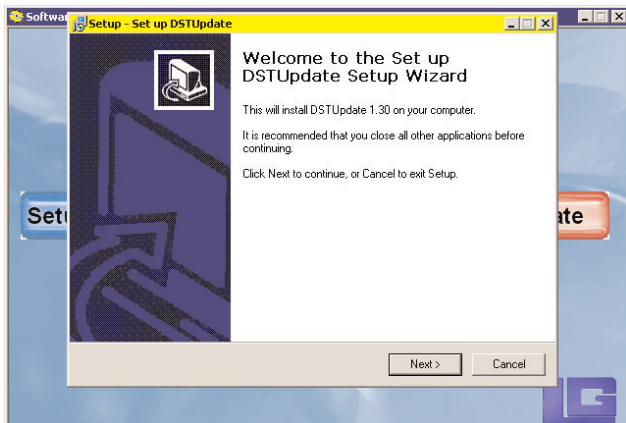
Screen 14



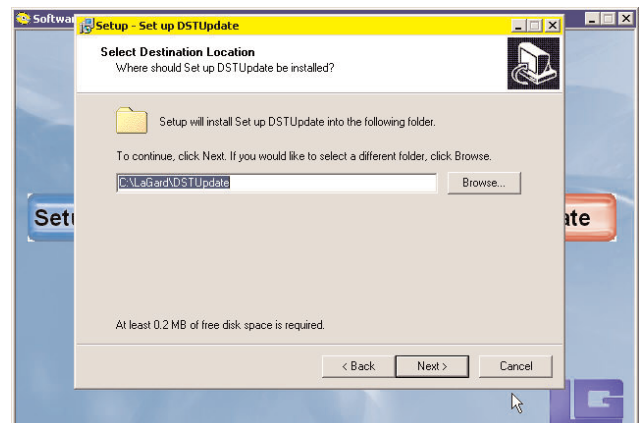
Screen 15

## DSTUpdate SOFTWARE INSTALLATION

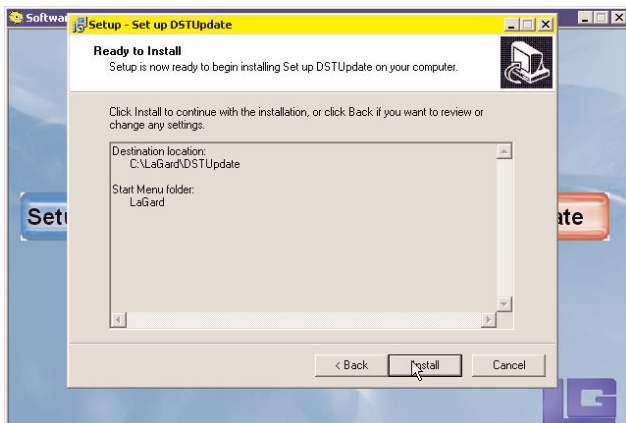
The final software installation is the DSTUpdate (Daylight Savings Time). This software allows the management of Daylight Savings Time on the locks. Select the Total Audit button from the software selection screen, *see screen 4*. The DSTUpdate will begin its installation process, *see screen 16*. Follow the screen prompts until this installation is complete. Just like the Set-up Software and the Total Audit software, the DSTUpdate will install in the LA GARD program group, *see screen 17*.



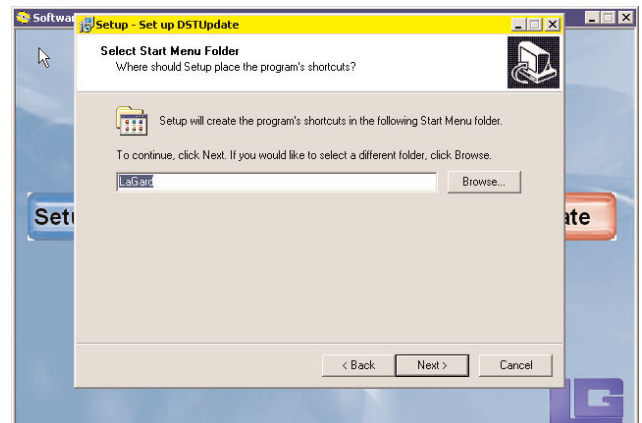
Screen 16



Screen 17



Screen 18



Screen 19

Once the DSTUpdate installation is complete a shortcut icon will be created on the desktop. Short cut icons for both the Total Audit and SMARTLINC Set-up can be created by following the steps listed.

- ① Left click on the START button and find the LA GARD program group.
- ② Right click on "Smartlincsetup" and select the option marked "Send To."
- ③ Select the option marked "Desktop (create shortcut)"
- ④ Repeat steps for Total Audit.