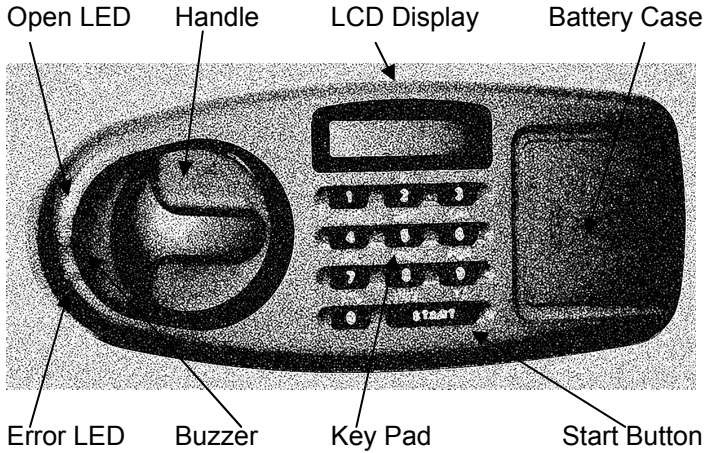


Electronic Fire Safe Operating Instructions



Congratulations on your purchase of the Adesco 1 hour electronic fire safe.

Getting Acquainted



Power on Self Test

When the batteries are replaced the lock will run a power on self-test if the LCD displays "good" the lock will function properly otherwise below are the error codes and possible causes.

Code	Possible Cause	Solution
Err F	Start Button stuck or is being pressed	Make sure the button moves freely in the housing.
Err b	Memory button is stuck or being pressed	Make sure button moves freely and is not being touched by any other objects.
Err E	Circuit Board Error	Call for Service
Err 1~9	One or more of the number keys are stuck or being pressed	Make sure the buttons move freely in the housing

Changing the battery

When battery power runs low the LCD will display "LO-BAT" when the start button is pressed. The batteries should be replaced as soon as possible with 4 new "AA" batteries. Do not mix new and used batteries in the lock.

Opening the Safe

The safe has two pin codes the factory codes are 123456 and 567890 either code will open the safe.

1. Press the "START" key
2. Enter either code (123456), (567890), or (Your PIN)
3. The green LED will light and you will here the Open tones.

4. Turn the handle Clockwise until it stops and pull open the door.

Changing the 1st PIN Code

1. With the door open turn the handle to the locked position
2. Push the "START" key
3. Enter the NEW 6-digit code
4. Push the Memory Key inside the back cover (see fig. 1)
5. The LCD should Read "In"

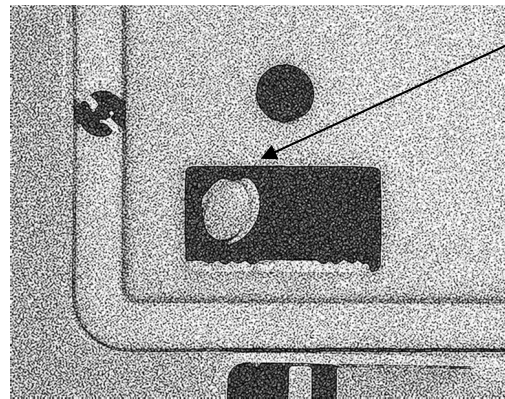


Figure 1: Memory Key inside Back Cover

Refer to the "Opening the Safe" section to test the new codes.

Changing the 2nd PIN Code

1. With the door open turn the handle to the locked position
2. Push the Memory Key inside the back cover (see fig. 1)
3. Push the "START" key
4. Enter the NEW 6-digit code
5. The LCD should Read "In"

Refer to the "Opening the Safe" section to test the new codes.

Caution: Test the new codes with the door in the open position.

Wrong Try Penalty

If a wrong code is entered more than 5 consecutive times then an error tone will sound and all functions will be locked for 3 minutes.