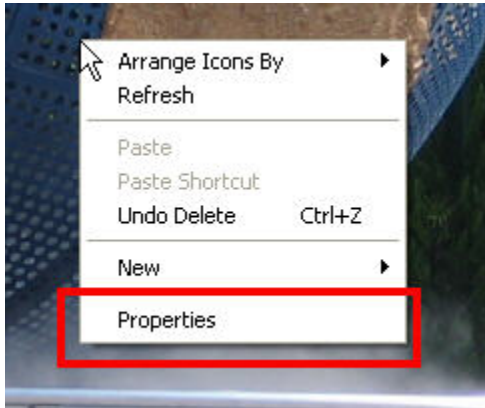


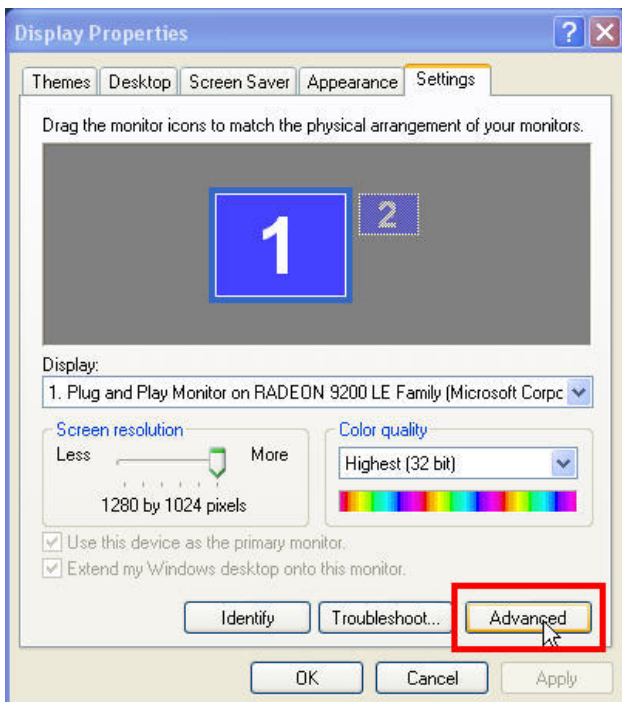
CMS Setup Check

Acceleration Setup (part1)

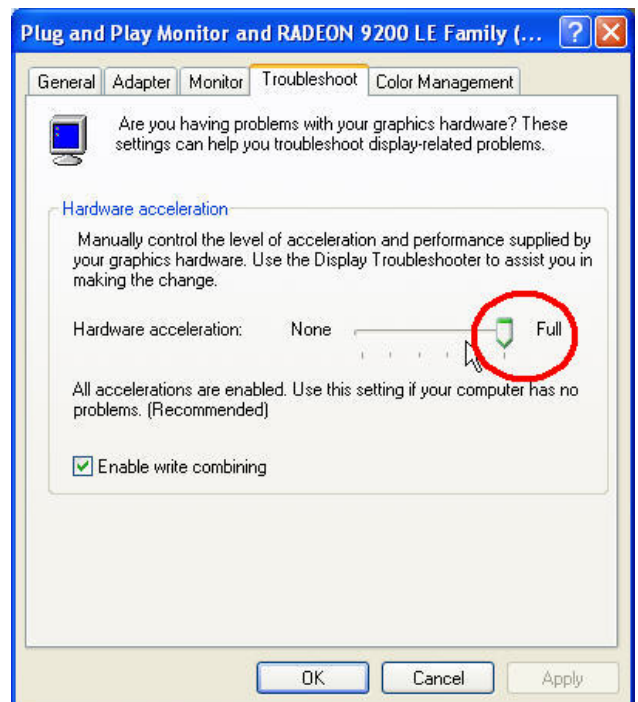


1.) Right click the desktop and select the Properties option

2.) Click on Settings tab Then select Advanced

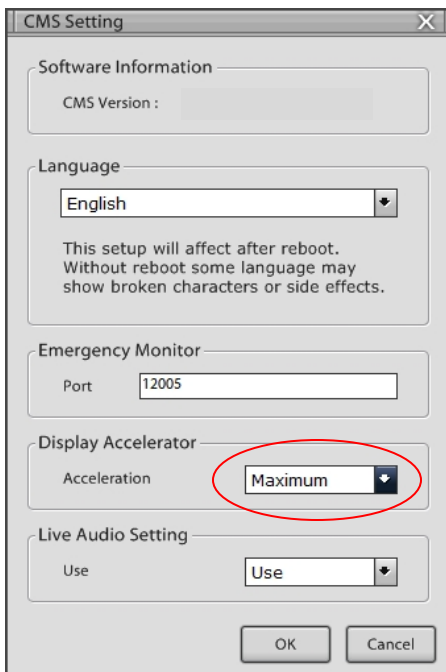


3.) Check the Hardware Acceleration. The setting should be on Full.



Acceleration Setup (part2)

1) Run CMS Setup and click on “CMS Settings”



2) Some systems do not support certain Display Accelerator settings. If your current settings does not work try the others settings to match your system.

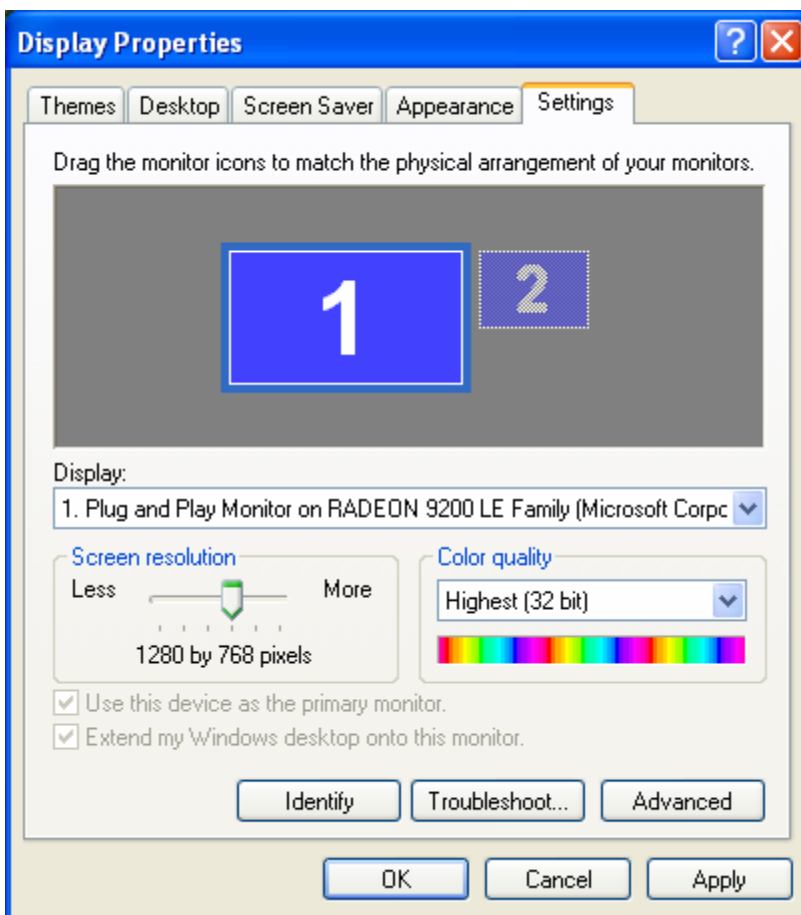
Display properties setup:

Enter Display Properties > Settings

Select at least:

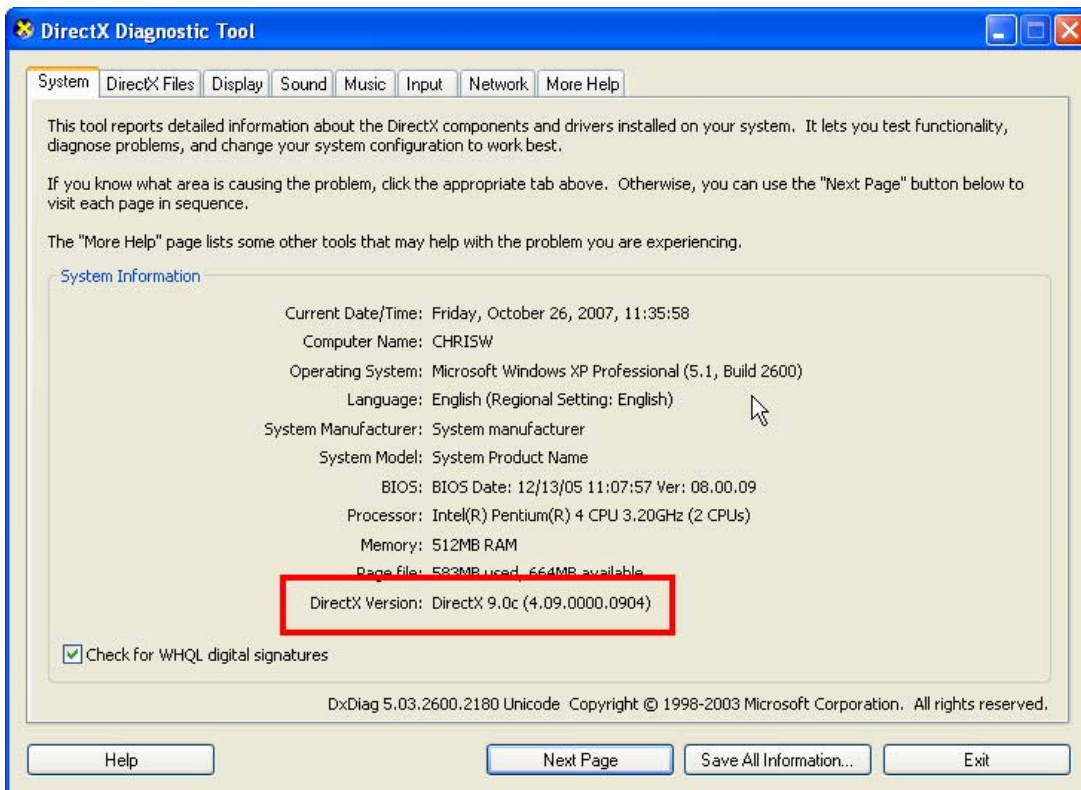
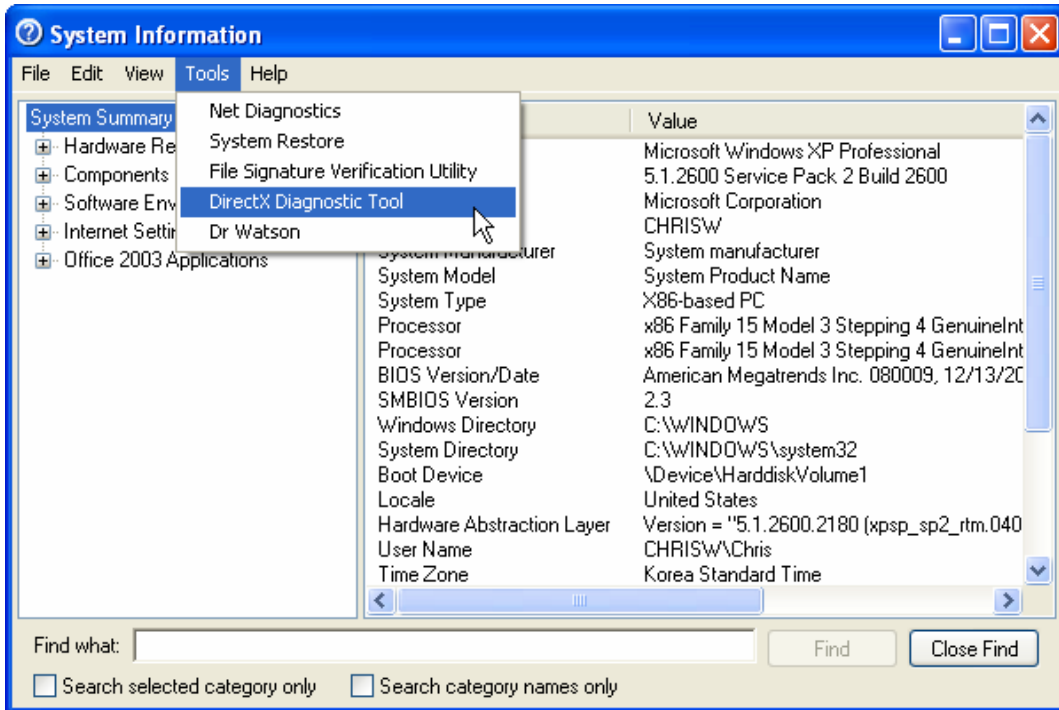
Screen Res. 1024 x 768

Color: True Color 32 Bit



Direct X Setup

Check that the remote computer is using a version of Direct X higher than version 7.0. To run diagnostic utility, go to start, run and type in dxdiag and hit ok.



Direct X Acceleration Setup

Make sure that all the available Direct x acceleration features are enabled.

